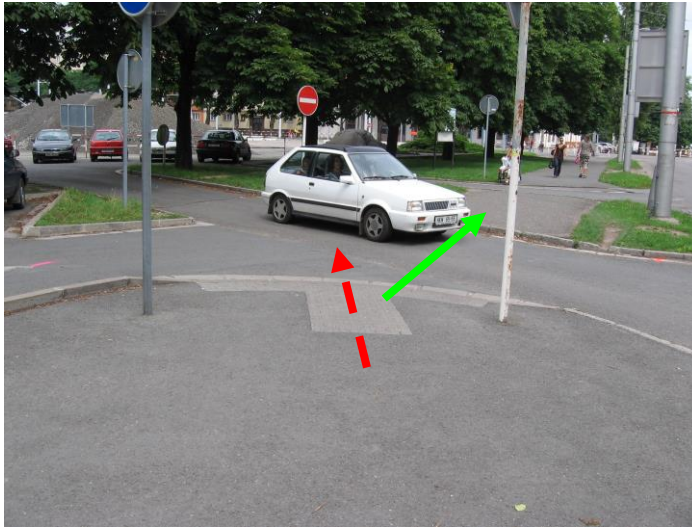


Country

Czech Republic

INCORRECT SOLUTION:



Pedestrian crossing

Commentary:

Incorrect tactile guiding on the pedestrian crossing – it arrangement leads blind people out of zebra-area (red direction). Very dangerous for blind people.

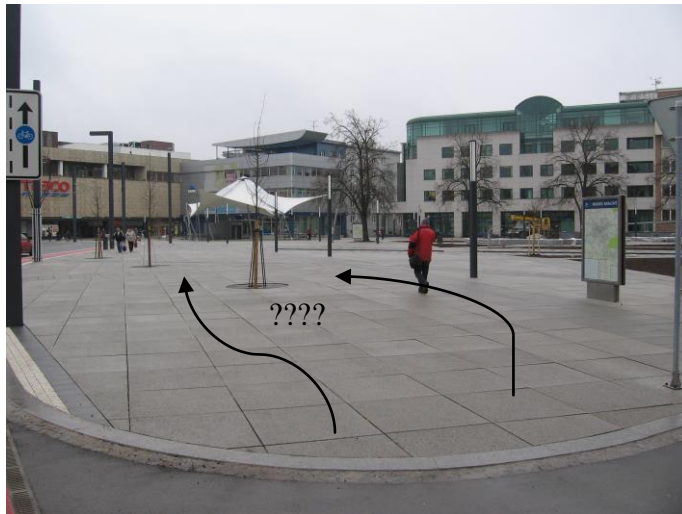
CORRECT SOLUTION:



Stop block for white stick

Commentary:

Stop block for white stick correctly placed in place bus stop (stop pillar).

INCORRECT SOLUTION:

Broad place without arrangement for blind

Commentary:

Place in city - shopping centre without any arrangement for blind people. This area is not usable for blind people.

CORRECT SOLUTION:

Guiding line for blind people

Commentary:

Tactile guiding line for blind people – correct material (surface - groove), colour and dimension (40 cm wide).

Country

Czech Republic

CORRECT SOLUTION:



Parking place in the same level as pedestrian path

Commentary:

Correct arrangement (colour contrast tactile paving with plane paving in surround) at the interface between the pedestrian path and parking place in the same level. Important for blind people.

CORRECT SOLUTION:



Cycling path in the same level as pedestrian path

Commentary:

Cycling path is correctly separated from other pedestrian path. Blind people identify this tactile (30 cm wide paving) arrangement by white stick.

Country

Czech Republic

INCORRECT SOLUTION:



Parking place for PRM

Commentary:

Narrow parking place for PRM. People in wheelchair get out car directly to the road left.

CORRECT SOLUTION:



Parking place for PRM

Commentary:

Correct parking places for people with reduced mobility – lowered kerb (max. height 2 cm) is important for people in wheelchair. Important is also marking of these places with official emblems.

Country

Czech Republic

INCORRECT SOLUTION:



Bus stop

Commentary:

Incorrect tactile paving (red belt on the left - near the boarding edge) – for blind people confusing arrangement.

CORRECT SOLUTION:



Tactile guiding on the bus stop

Commentary:

Correct tactile guiding for blind people on the bus stop. The tactile paving guides blind people to the stop pillar or to shelter. There are colour contrast paving (no tactile) near the boarding edge only.

INCORRECT SOLUTION:

Pedestrian crossing with isle

Commentary:

Pedestrian crossing without arrangements for blind people. There is whole isle space built from tactile paving – this arrangement don't guide blind people.

CORRECT SOLUTION:

Pedestrian crossing with isle and traffic lights

Commentary:

Pedestrian crossing with traffic lights and isle with correct tactile arrangements: warning and guide lines for blind people on the isle and in zebra.

INCORRECT SOLUTION:**Pedestrian crossing****Commentary:**

Pedestrian crossing without tactile guiding for blind people. This crossing (about 20 m long) is not usable for blind people.

INCORRECT SOLUTION:**Pedestrian crossing – blind people guiding****Commentary:**

This solution guides the blind people out of zebra area – very dangerous mistake. Relatively often mistake of crossing adaptation in the Czech Republic and other countries too.

Country

Czech Republic

INCORRECT SOLUTION:



Pedestrian crossing

Commentary:

Very often mistake (in each V4 countries) – tactile guiding leads the blind people out of zebra – to the road!

CORRECT SOLUTION:



Pedestrian crossing (with isle)

Commentary:

This crossing is good adapted for independent and safe using of blind people. There is tactile guiding and warning belts created on the pedestrian path, in the road and on the isle too.

Country

Czech Republic

INCORRECT SOLUTION:



End of railway platform

Commentary:

The tactile (grooved) guiding line is short; it must lead up to end of platform; allowable distance between end of grooved guiding line and the rail is 0,3 m. This is very dangerous mistake for blind people!

CORRECT SOLUTION:



End of railway platform

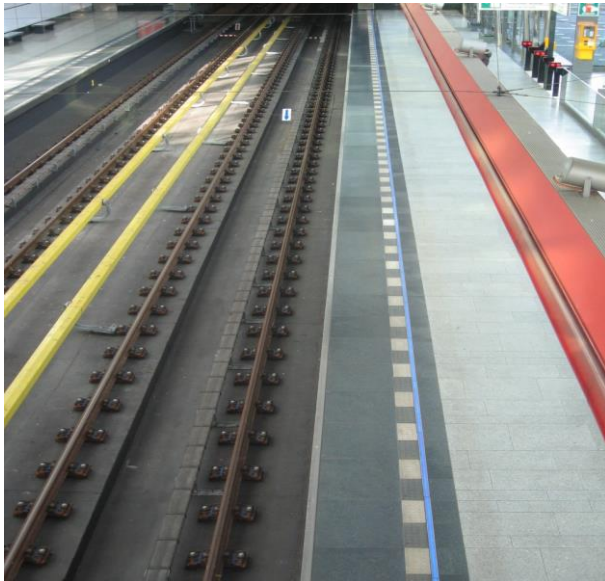
Commentary:

Correct tactile adaptation on the end of platform (warning belt, colour contrast, safety rail).

Country

Czech Republic

CORRECT SOLUTION:



Underground platform

Commentary:

White-black warning belt (wide 15 cm, colour contrast, tactile contrast) informs of blind people with white stick about interface safe × dangerous area on the underground platform in the Czech republic. Blue line informs all other passengers on the platform about train who is coming in station. (The red construction hangs over the platform, it is not lying on the floor of platform).

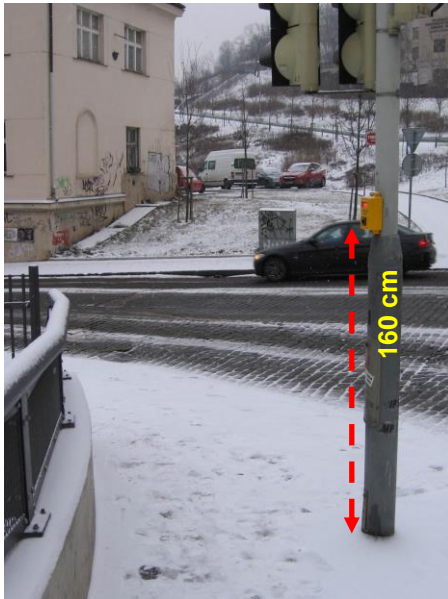
INCORRECT SOLUTION:



Pedestrian crossing – declination

Commentary:

Dangerous declination on the interface pedestrian way and crossing - risk of turn over (to back) for people in wheelchair.

INCORRECT SOLUTION:

Operating height

Commentary:

This very high placed button of pedestrian crossing signalling is not usable (or very heavily usable) for people in wheelchair or small children.

CORRECT SOLUTION:

Manoeuvring space and operating height

Commentary:

Good placing of items in manoeuvring space and operating height for people in wheelchair (0,6 – 1,2 m in the Czech republic).