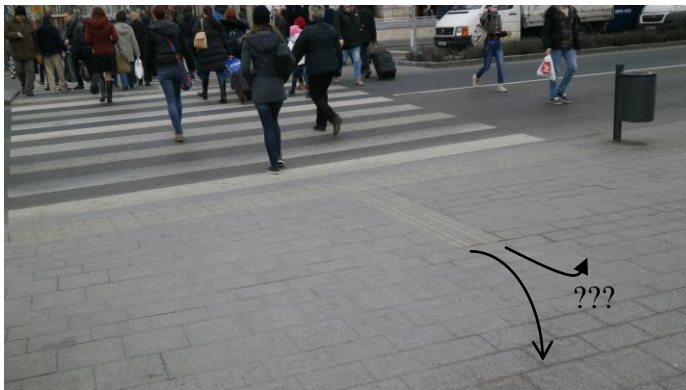


Country

Hungary

INCORRECT SOLUTION:



Pedestrian crossing – guiding line

Commentary:

Pedestrian with adaptation for wheelchairs (in-level interface road – pedestrian path). The grooved guiding line doesn't lead the blind people to next guiding line.

CORRECT SOLUTION:



Pedestrian crossing – guiding line

Commentary:

Grooved guiding line leads the blind from fence to the pedestrian crossing – good solution for blind.

Country

Hungary

INCORRECT SOLUTION:



Pedestrian crossing

Commentary:

Signal belt without tactile contrast and in absolute incorrect direction – this dangerous arrangement leads the blind to the center of intersection!! Often mistake in all V4 countries.

CORRECT SOLUTION:



Pedestrian crossing

Commentary:

Tactile pavement – warning belt on the interface road – pedestrian path and grooved guiding line is leading in the axis the crossing.

Country

Hungary

INCORRECT SOLUTION:



Bicycling path

Commentary:

Bicycling path in the same level as the pedestrian path – without tactile interface – dangerous for blind people.

CORRECT SOLUTION:



Bicycling path

Commentary:

Pavement and bicycle path on the same level, with tactile marking for blind people.

Country

Hungary

INCORRECT SOLUTION:



Crossing of tram track

Commentary:

Obvious problem - practically inaccessible for wheelchairs users, dangerous for other pedestrians.

INCORRECT SOLUTION:



Tram tracks crossing

Commentary:

Poor arrangement for blind people – this tactile guiding from steel elements is not locating by white stick.

Country

Hungary

INCORRECT SOLUTION:



Pedestrian crossing

Commentary:

Guiding lane must point to the other side of the street in the axis of the pedestrian crossing – this example leads the blind to the center of the intersection.

CORRECT SOLUTION:



Tram stop

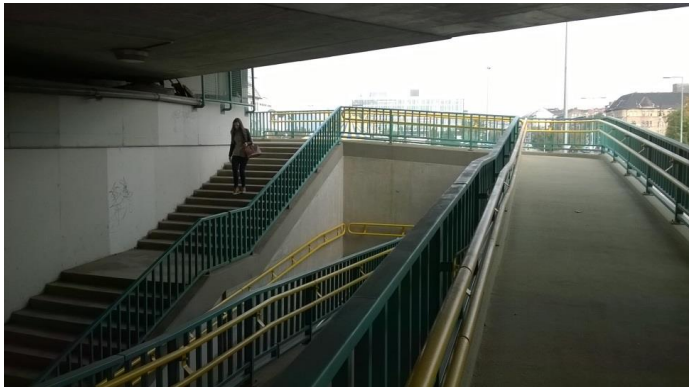
Commentary:

Tactile guiding from the access path to the tram first door.

Country

Hungary

CORRECT SOLUTION:



Barrier-free access

Commentary:

Alternative access (barrier-free ramp) for wheelchairs to tram station (there: line 1 in Budapest).

INCORRECT SOLUTION:



Isolated ramp

Commentary:

Negligence during planning and construction.

Country

Hungary

CORRECT SOLUTION:



Barrier-free station

Commentary:

In-level access to platforms, ticket office and waiting hall. Good solution for wheelchair; there are missing tactile guiding for blind people.



Underground vehicles

Commentary:

Easy access for people in wheelchair to the underground vehicles.

Country

Hungary

INCORRECT SOLUTION:



Crossing without guiding lines

Commentary:

This crossing is not safe and independent usable for blind people – there are missing the guiding lines on the pedestrian path and also on the isles.

CORRECT SOLUTION:



Guiding line in interior

Commentary:

Correct tactile (grooved) guiding line with turning (right) in area of Budapest railway station.

Country

Hungary

INCORRECT SOLUTION:



Pedestrian crossing

Commentary:

Inaccessible pedestrian crossing for blind; only one site of crossing has adaptation for people in wheelchair but declination of the kerb is unacceptable.

CORRECT SOLUTION:



Barrier-free access to underground

Commentary:

Access to Budapest metro by lift (all stations on the Line 4) – good solution for wheelchairs and other passengers with reduced mobility – accompany of baby carriages, old people, people in convalescence (with short-time reduced mobility) etc.

Country

Hungary

INCORRECT SOLUTION:

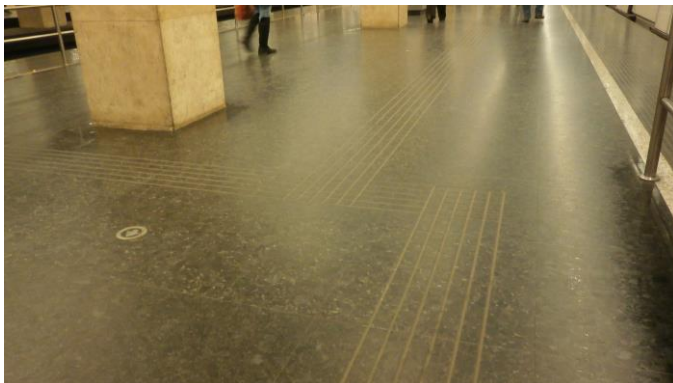


Guiding line in interior

Commentary:

Incorrect arrangement of grooved guiding line in underpass of underground: this guiding line does not continue – poor solution for blind people. Often poor arrangement in all V4 countries.

CORRECT SOLUTION:



Tactile guiding in underground

Commentary:

Grooved tactile guiding for blind people on the platform of underground.

Country

Hungary

INCORRECT SOLUTION:

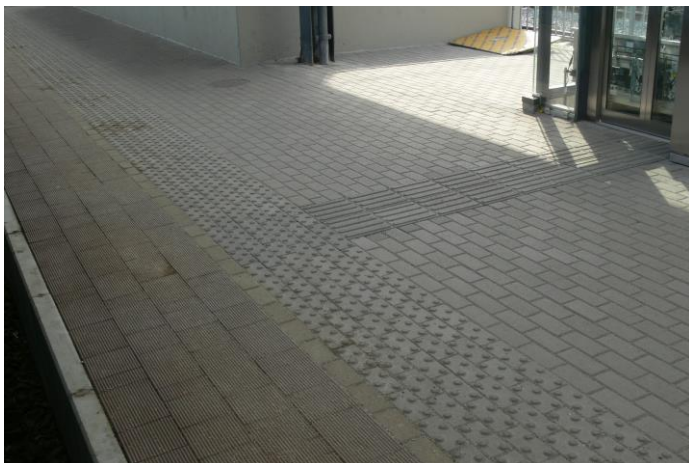


Suburban rail platform

Commentary:

Older type of suburban train and low platform – unacceptable combination for people in wheelchair, accompany of baby prams and partially for seniors.

CORRECT SOLUTION:



Rail platform

Commentary:

Tactile marking on the rail platform – warning belt (with cones / domes) and grooved guiding line to the lift.