

Country

Slovakia

INCORRECT SOLUTION:



Vehicles versus platform

Commentary:

Passenger carriage with higher level of floor than the platform – not usable for people in wheelchair and other compensatory aides.

CORRECT SOLUTION:



Railway platform versus vehicles

Commentary:

Low-floor train and railway platform with high 550 mm – necessary solution for people in wheelchair. The ramp for wheelchairs is built-in in vehicles.

Country

Slovakia

INCORRECT SOLUTION:



Pedestrian crossing

Commentary:

Confusing solution of tactile guiding for blind people.

CORRECT SOLUTION:



Pedestrian crossing

Commentary:

The warning belt, signal belt and guiding belt in zebra are correctly applied. Good – safety solution for blind people with white stick.

Country

Slovakia

INCORRECT SOLUTION:



Pedestrian crossing

Commentary:

Incorrect surface of tactile guiding lines (signal, warning belts) for blind people. Dangerous for other pedestrians too.

CORRECT SOLUTION:



Pedestrian crossing

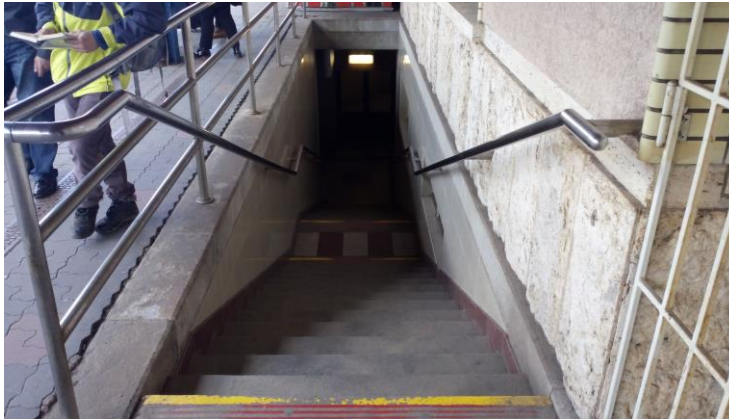
Commentary:

Correct guiding line (signal belt) from tactile paving, it leads the blind in direction (axis) of the zebra.

Country

Slovakia

INCORRECT SOLUTION:



Access to the platform

Commentary:

Stairs without alternative solution of access to platform (lift, ramp etc.) - inaccessible railway platform for people in wheelchair.

CORRECT SOLUTION:



Access to the platform

Commentary:

Good access to the railway platform for all – wheelchairs, passengers with bicycles, baby prams also for blind people (green arrow shows grooved guiding line for blind people).

Country

Slovakia

CORRECT SOLUTION:



Orientation on the pedestrian crossing

Commentary:

Tactile – embossed – marking on the signaling pillar of pedestrian crossing. Blind people “read” the situation on the pedestrian crossing by fingers and identify direction of their next walking.

CORRECT SOLUTION:



Information window for hard of hearing passengers

Commentary:

Information window with equipment for PRM, especially for hard of hearing people – transparent glass is necessary for lip-read, microphone for increasing of spoken word. Small mistake – missing marking of window (international symbol of accessibility).

Country

Slovakia

CORRECT SOLUTION:



Platform versus vehicle

Commentary:

Good solution of bridge the gap between vehicle and railway platform by way the telescopic step.

CORRECT SOLUTION:



Communication with engine-driver

Commentary:

Communication button for wheelchair – information to engine-driver about using of ramp.

Country

Slovakia

INCORRECT SOLUTION:



Passenger hall

Commentary:

Incorrect solution of ramp in passenger hall – unacceptable declination – not usable for people in wheelchair.

CORRECT SOLUTION:



Tram stop – good for blind,
poor for wheelchair

Commentary:

Tactile guiding line for blind people – blind people define interface between safe and dangerous area; inaccessible vehicles for people in wheelchair – (max. acceptable vertical difference between boarding edge and floor of vehicles (tram) is 200 mm, 160 mm respectively).

Country

Slovakia

INCORRECT SOLUTION:



Access to the passenger hall

Commentary:

Access with stairs – without ramp or alternative entrance – not usable solution for wheelchairs, accompany of baby carriages etc.

CORRECT SOLUTION:



Tactile guiding line for blind people

Commentary:

Tactile guiding line for blind people is leading from railway platform to passenger hall. In-level access for people in wheelchair.